

# LIMESCALE



**problem solved!**



- Effective on all types of pipework
- Easy to install
- No plumbing, or chemicals
- Maintenance Free - just fit and forget
- Fully potted for total reliability and water resistance
- Remote monitoring facility available
- Constant and reliable protection against encrusting limescale

**HYDROPATH TECHNOLOGY**  
PATENTED

The most advanced development in the fight against encrusting limescale

[www.hydropath.com](http://www.hydropath.com)



C45



C60



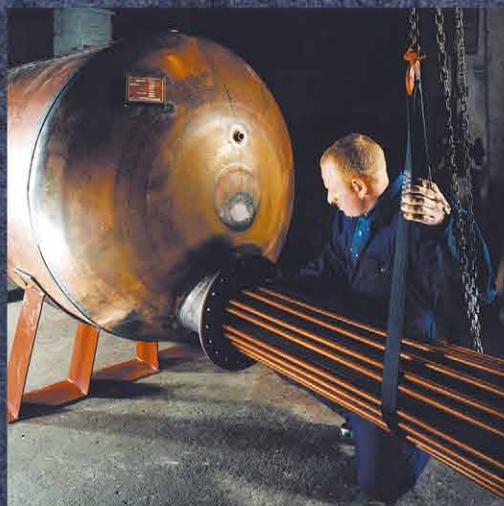
C100



C120



C160



### Hydroflow works... consistently

Hydroflow water conditioners are unique, no other product works the same way. Based on advanced technology integrating ferrite with solid state electronics, Hydroflow transmits a powerful signal longitudinally throughout the entire plumbing system continually treating the water 24 hours a day. The signal works both up and down stream even in no-flow conditions ensuring consistent and reliable protection.

### Most vulnerable area... Protected

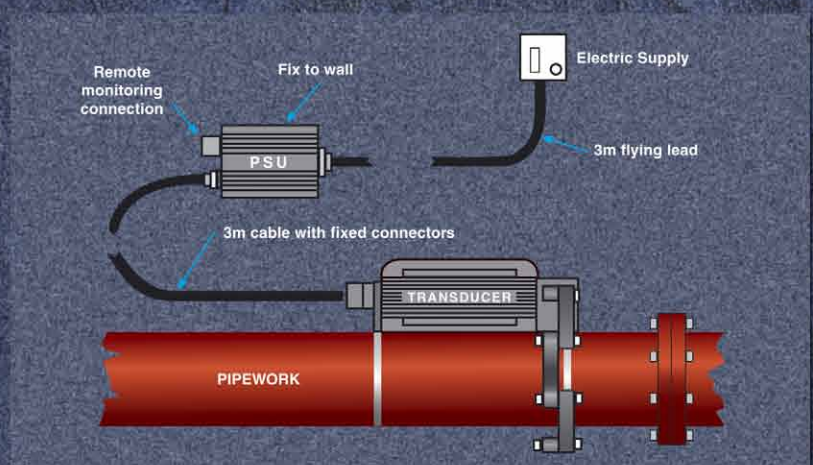
Hydroflow is installed close to the area where most encrusting limescale is created, at the point of heat exchange or pressure change. This ensures that maximum protection is given to the most vulnerable area. However, since the signal travels everywhere in the system, all parts are protected.

### Technically minded... ?

Randomly varying electric fields are induced into the water and propagate throughout the entire plumbing system. These electric fields cluster the ions in the hard water resulting in the production of nuclei (seed crystals) everywhere in the system. When water is heated the resulting precipitate that usually deposits on hot surfaces as encrusting limescale, grows in 20 mA 78mA suspension and is then washed away in the flow. The fields treat the water both up and down stream and will also transmit to the primary circuit. The treated water is normally able to dissolve existing scale in just a few weeks.

### Installation... made easy

The compact transducer unit fits all types and sizes of pipework, from 30mm to 200mm O/D. Designed for easy installation, the unit simply straps around the pipe and is connected through the power supply unit (PSU) to the mains electric supply with the cables/connectors supplied.



Model	Maximum Pipe O/D	Universal Input Range (PSU)	Input Current mA min	Input Current mA max	Weight Kg
C45	45mm	87 to 240 VAC/47-63 Hz	20mA	78mA	4
C60	60mm	87 to 240 VAC/47-63 Hz	31mA	89mA	4
C100	100mm	87 to 240 VAC/47-63 Hz	20mA	78mA	5
C120	120mm	87 to 240 VAC/47-63 Hz	29mA	83mA	5
C160	160-200mm	87 to 240 VAC/47-63 Hz	32mA	92mA	6

Dimensions of All Models: Length: 250mm Height: 72mm Depth: 138mm

### Hydropath Holdings Ltd

Unit F, Acorn Park Industrial Estate  
Redfield Road, Nottingham NG7 2TR

Telephone: +44 (0) 115 986 9966  
Fax: +44 (0) 115 986 9944

Email: sales@hydropath.com

# HYDROPATH TECHNOLOGY

PATENTED

www.hydropath.com